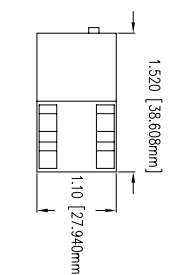
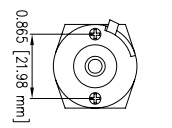
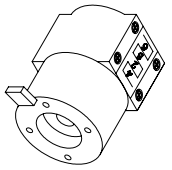


CA4 US6 REMOVABLE ROTARY SWITCH SPECIFICATIONS (90° WIRE TERMINATION ANGLE)

| MFG. PART NUMBER | INNOVATION PART NUMBER | SWITCH CONFIGURATION | MFG. PART NUMBER | INNOVATION PART NUMBER | SWITCH CONFIGURATION | MFG. PART NUMBER | INNOVATION PART NUMBER | SWITCH CONFIGURATION | MFG. PART NUMBER | INNOVATION PART NUMBER | SWITCH CONFIGURATION | MFG. PART NUMBER | INNOVATION PART NUMBER | SWITCH CONFIGURATION | MFG. PART NUMBER | INNOVATION PART NUMBER | SWITCH CONFIGURATION | MFG. PART NUMBER | INNOVATION PART NUMBER | SWITCH CONFIGURATION | | | |
|---|---|---|---|--|---|---|--|---|---|--|---|---|--|---|---|--|---|---|--|---|---|--|---|
| CA4US6662 | 5932-0014 | 4PDT 180° THROW | CA4US6663 | 5932-0017 | DP-TT 90° THROW | CA4US6664 | 5932-1000 | 4PDT 90° THROW | CA4US6665 | 5932-2124 | 4PDT 90° THROW | CA4US6666 | 5932-0017 | DP-TT 90° THROW | CA4US6667 | 5932-0017 | DP-TT 90° THROW | CA4US6668 | 5932-0017 | DP-TT 90° THROW | CA4US6669 | 5932-0017 | DP-TT 90° THROW |
| POSITION 1: 9:00 2 4 1 3 N/C N/C | POSITION 2: 3:00 2 4 1 3 N/C N/C | POSITION 3: 9:00 2 4 1 3 N/C N/C | POSITION 1: 9:00 2 4 1 3 N/C N/C | POSITION 2: 12:00 2 4 1 3 N/C N/C | POSITION 3: 3:00 2 4 1 3 N/C N/C | POSITION 1: 9:00 2 4 1 3 N/C N/C | POSITION 2: 12:00 2 4 1 3 N/C N/C | POSITION 3: 3:00 2 4 1 3 N/C N/C | POSITION 1: 9:00 2 4 1 3 N/C N/C | POSITION 2: 12:00 2 4 1 3 N/C N/C | POSITION 3: 3:00 2 4 1 3 N/C N/C | POSITION 1: 9:00 2 4 1 3 N/C N/C | POSITION 2: 12:00 2 4 1 3 N/C N/C | POSITION 3: 3:00 2 4 1 3 N/C N/C | POSITION 1: 9:00 2 4 1 3 N/C N/C | POSITION 2: 12:00 2 4 1 3 N/C N/C | POSITION 3: 3:00 2 4 1 3 N/C N/C | POSITION 1: 9:00 2 4 1 3 N/C N/C | POSITION 2: 12:00 2 4 1 3 N/C N/C | POSITION 3: 3:00 2 4 1 3 N/C N/C | POSITION 1: 9:00 2 4 1 3 N/C N/C | POSITION 2: 12:00 2 4 1 3 N/C N/C | POSITION 3: 3:00 2 4 1 3 N/C N/C |

| MFG. PART NUMBER | INNOVATION PART NUMBER | SWITCH CONFIGURATION | MFG. PART NUMBER | INNOVATION PART NUMBER | SWITCH CONFIGURATION | MFG. PART NUMBER | INNOVATION PART NUMBER | SWITCH CONFIGURATION | MFG. PART NUMBER | INNOVATION PART NUMBER | SWITCH CONFIGURATION | MFG. PART NUMBER | INNOVATION PART NUMBER | SWITCH CONFIGURATION | MFG. PART NUMBER | INNOVATION PART NUMBER | SWITCH CONFIGURATION | MFG. PART NUMBER | INNOVATION PART NUMBER | SWITCH CONFIGURATION | | | |
|---|--|---|---|--|---|---|--|---|---|--|---|---|--|---|---|--|---|---|--|---|---|--|---|
| CA4US6670 | 5932-5173 | 4PDT 90° THROW | CA4US6671 | 5932-5174 | 4PDT 90° THROW | CA4US6672 | 5932-7144 | 4PDT 90° THROW | CA4US6673 | 5932-8144 | 4PDT 180° THROW | CA4US6674 | 5932-9125 | 4PDT 90° THROW | CA4US6675 | 5932-9125 | 4PDT 90° THROW | CA4US6676 | 5932-9125 | 4PDT 90° THROW | CA4US6677 | 5932-9125 | 4PDT 90° THROW |
| POSITION 1: 9:00 2 4 1 3 N/C N/C | POSITION 2: 12:00 2 4 1 3 N/C N/C | POSITION 3: 3:00 2 4 1 3 N/C N/C | POSITION 1: 9:00 2 4 1 3 N/C N/C | POSITION 2: 12:00 2 4 1 3 N/C N/C | POSITION 3: 3:00 2 4 1 3 N/C N/C | POSITION 1: 9:00 2 4 1 3 N/C N/C | POSITION 2: 12:00 2 4 1 3 N/C N/C | POSITION 3: 3:00 2 4 1 3 N/C N/C | POSITION 1: 9:00 2 4 1 3 N/C N/C | POSITION 2: 12:00 2 4 1 3 N/C N/C | POSITION 3: 3:00 2 4 1 3 N/C N/C | POSITION 1: 9:00 2 4 1 3 N/C N/C | POSITION 2: 12:00 2 4 1 3 N/C N/C | POSITION 3: 3:00 2 4 1 3 N/C N/C | POSITION 1: 9:00 2 4 1 3 N/C N/C | POSITION 2: 12:00 2 4 1 3 N/C N/C | POSITION 3: 3:00 2 4 1 3 N/C N/C | POSITION 1: 9:00 2 4 1 3 N/C N/C | POSITION 2: 12:00 2 4 1 3 N/C N/C | POSITION 3: 3:00 2 4 1 3 N/C N/C | POSITION 1: 9:00 2 4 1 3 N/C N/C | POSITION 2: 12:00 2 4 1 3 N/C N/C | POSITION 3: 3:00 2 4 1 3 N/C N/C |

| MFG. PART NUMBER | INNOVATION PART NUMBER | SWITCH CONFIGURATION | MFG. PART NUMBER | INNOVATION PART NUMBER | SWITCH CONFIGURATION | MFG. PART NUMBER | INNOVATION PART NUMBER | SWITCH CONFIGURATION | MFG. PART NUMBER | INNOVATION PART NUMBER | SWITCH CONFIGURATION | MFG. PART NUMBER | INNOVATION PART NUMBER | SWITCH CONFIGURATION | MFG. PART NUMBER | INNOVATION PART NUMBER | SWITCH CONFIGURATION | MFG. PART NUMBER | INNOVATION PART NUMBER | SWITCH CONFIGURATION | | | |
|---|--|---|---|--|---|---|--|---|---|--|---|---|--|---|---|--|---|---|--|---|---|--|---|
| CA4US6678 | 5932-4124 | 4PDT 90° THROW | CA4US6679 | 5932-7144 | 4PDT 90° THROW | CA4US6680 | 5932-8144 | 4PDT 180° THROW | CA4US6681 | 5932-8144 | 4PDT 180° THROW | CA4US6682 | 5932-9125 | 4PDT 90° THROW | CA4US6683 | 5932-9125 | 4PDT 90° THROW | CA4US6684 | 5932-9125 | 4PDT 90° THROW | CA4US6685 | 5932-9125 | 4PDT 90° THROW |
| POSITION 1: 9:00 2 4 1 3 N/C N/C | POSITION 2: 12:00 2 4 1 3 N/C N/C | POSITION 3: 3:00 2 4 1 3 N/C N/C | POSITION 1: 9:00 2 4 1 3 N/C N/C | POSITION 2: 12:00 2 4 1 3 N/C N/C | POSITION 3: 3:00 2 4 1 3 N/C N/C | POSITION 1: 9:00 2 4 1 3 N/C N/C | POSITION 2: 12:00 2 4 1 3 N/C N/C | POSITION 3: 3:00 2 4 1 3 N/C N/C | POSITION 1: 9:00 2 4 1 3 N/C N/C | POSITION 2: 12:00 2 4 1 3 N/C N/C | POSITION 3: 3:00 2 4 1 3 N/C N/C | POSITION 1: 9:00 2 4 1 3 N/C N/C | POSITION 2: 12:00 2 4 1 3 N/C N/C | POSITION 3: 3:00 2 4 1 3 N/C N/C | POSITION 1: 9:00 2 4 1 3 N/C N/C | POSITION 2: 12:00 2 4 1 3 N/C N/C | POSITION 3: 3:00 2 4 1 3 N/C N/C | POSITION 1: 9:00 2 4 1 3 N/C N/C | POSITION 2: 12:00 2 4 1 3 N/C N/C | POSITION 3: 3:00 2 4 1 3 N/C N/C | POSITION 1: 9:00 2 4 1 3 N/C N/C | POSITION 2: 12:00 2 4 1 3 N/C N/C | POSITION 3: 3:00 2 4 1 3 N/C N/C |



1.520 [38.608mm]
1.10 [27.940mm]
0.865 [21.98 mm]

INNOVATION INDUSTRIES INC
P.O. BOX 2996
RUSSELLVILLE, AR 72811
U.S.A.