



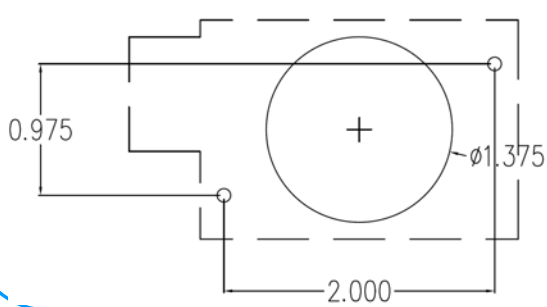
Pushbutton Cutouts & Stud Patterns

S - Button Style

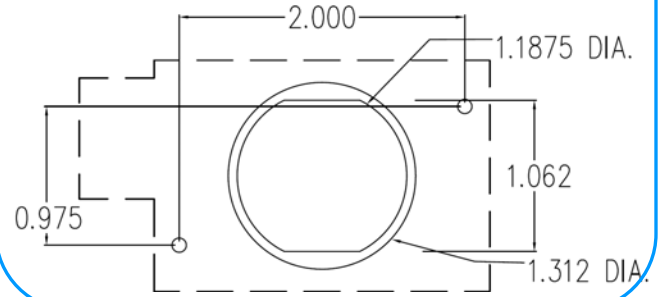


View from front of the Panel

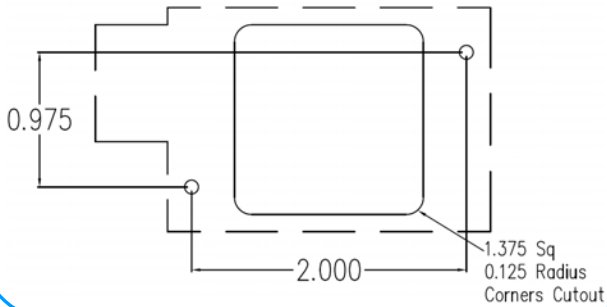
PB 1, PB 2, PB 3, PB 11, PB 12, PB 13, PB 14,
PB 15, PB 19, PB 20, PB 21, PB 29, PB 30, PB 31,
PB 33, PB35, PB36, PB37, PB38, PB39, PB44,
PB45, PB47, PB66



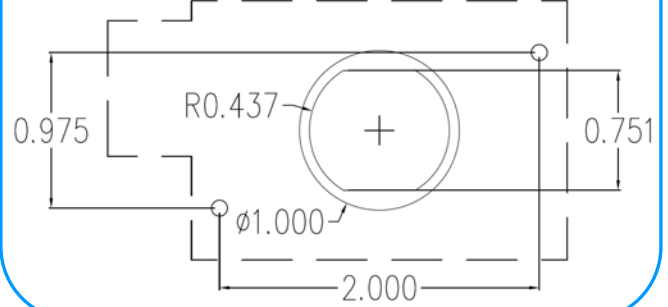
PB 52, PB 53, PB 54, PB 55, PB 69, PB 70



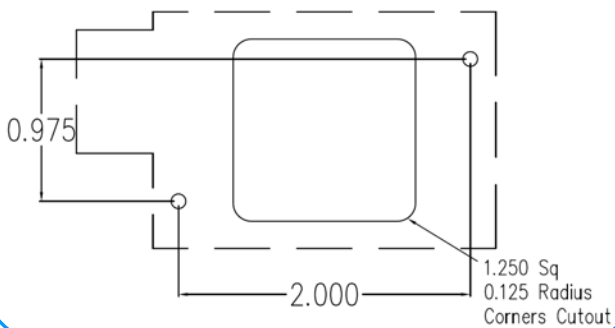
PB 4, PB 5, PB 6, PB 22, PB 32, PB 34, PB48, PB49,
PB67, PB68



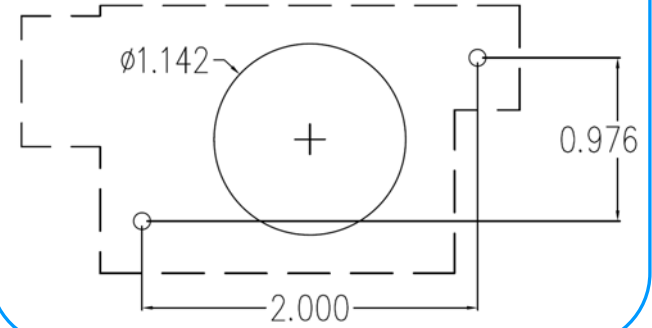
PB 43



PB 16, PB 17, PB 18



PB 41, PB 42



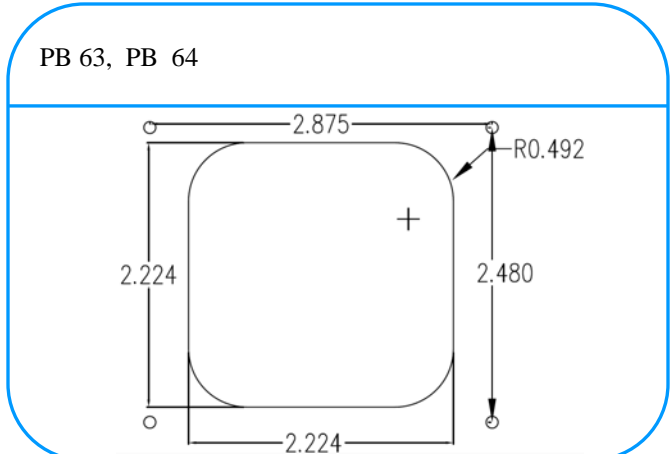
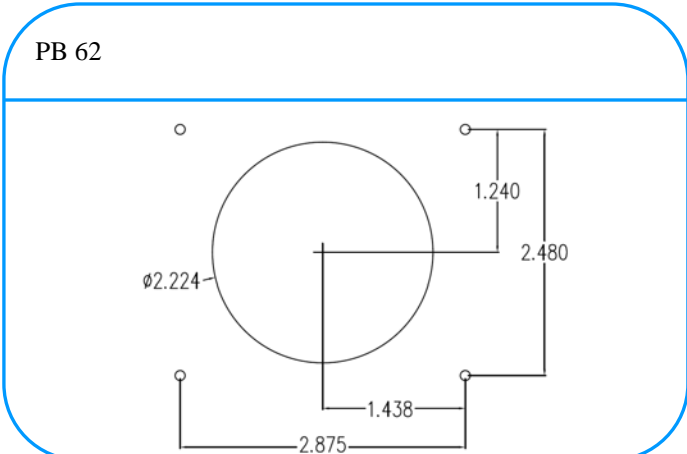
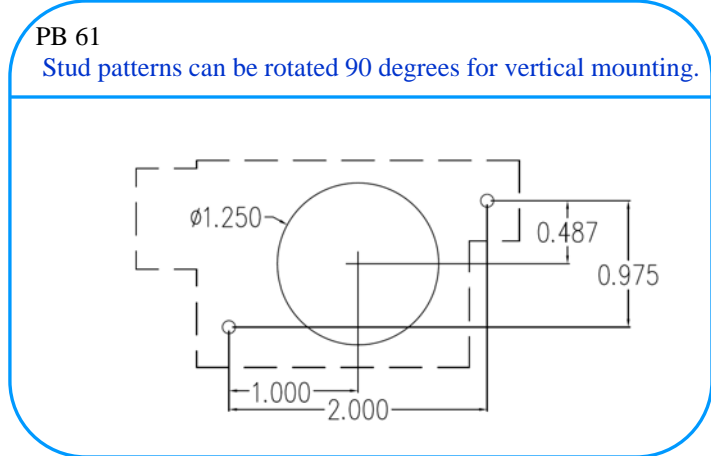
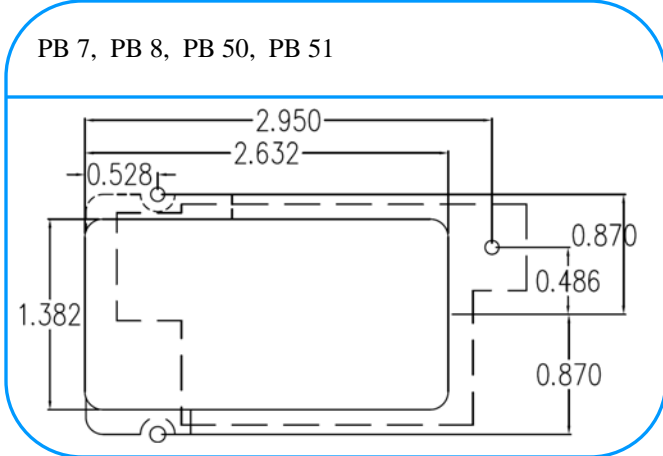
All Studs are 6-32 x 1.0625" long.
Stud patterns can be rotated 90 degrees for vertical mounting.



S - Button Style Pushbutton Cutouts & Stud Patterns



View from front of the Panel



All Studs are 6-32 x 1.0625" long.



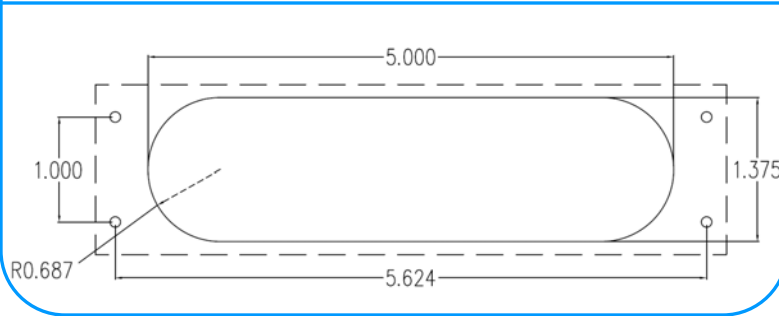
Bar Button Style

Pushbutton Cutouts & Stud Patterns

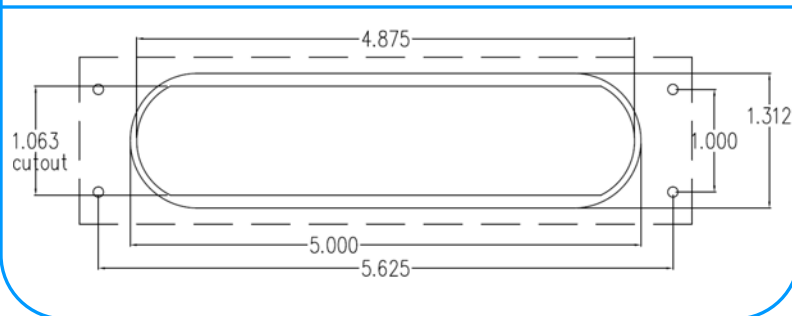


View from front of the Panel

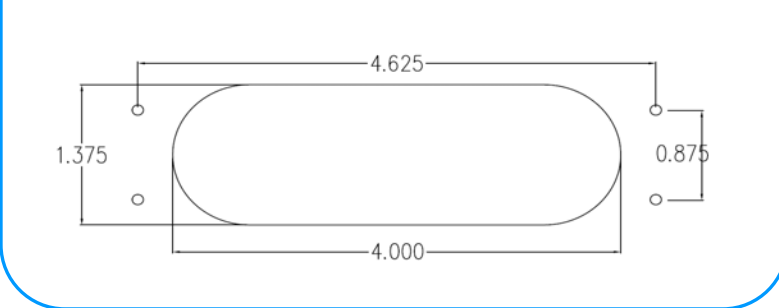
PB 10, PB 59, PB 60



PB 40



PB 56, PB 57, PB 58



All Studs are 6-32 x 1.5" long.

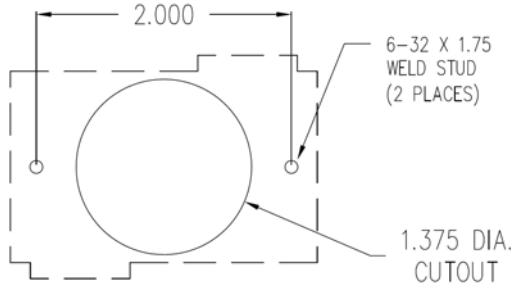


Micro - Touch Button Style

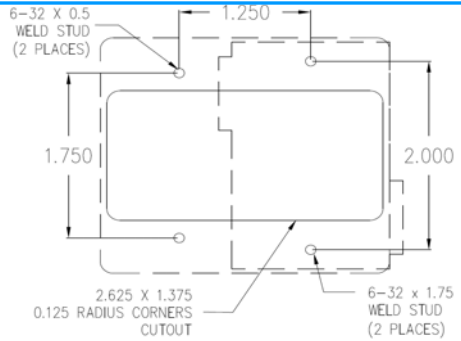
Pushbutton Cutouts & Stud Patterns



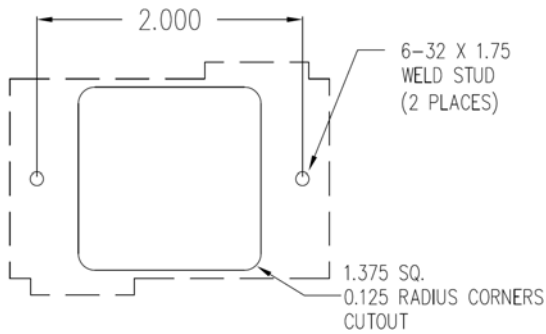
PB 1, PB 2, PB 3, PB 11, PB 12, PB 13, PB 14, PB 15,
PB 19, PB 20, PB 21, PB 29, PB 30, PB 31, PB 33, PB 34,
PB 35, PB 36, PB 37, PB 38, PB 39, PB 44, PB 45



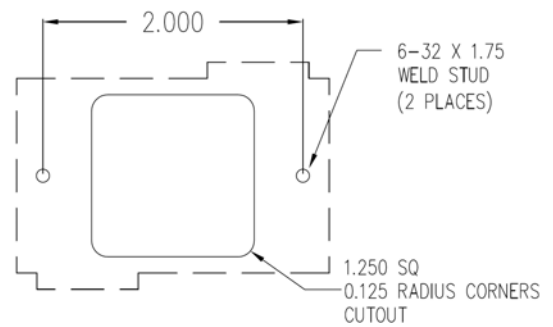
PB 7, PB 8



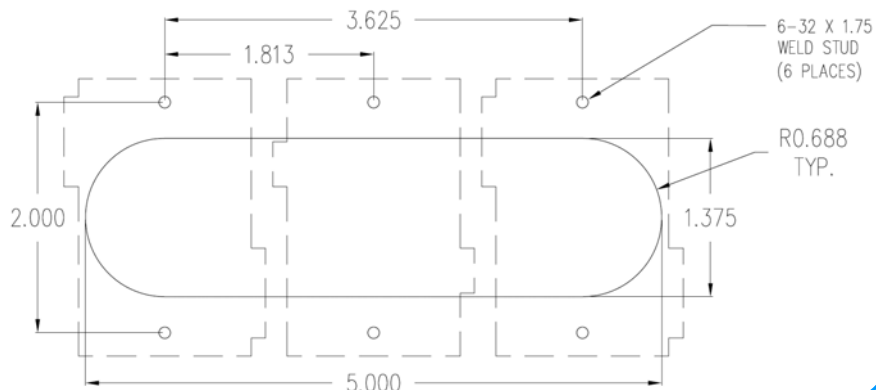
PB 4, PB 5, PB 6, PB 22, PB 32, PB 34



PB 16, PB 17, PB 18



PB 10



NOTE: PB 7, PB 8, PB 10 mounting is only as shown. All other stud patterns can be rotated 90 degrees for vertical mounting.